

Farhanahani binti Mahmud PhD, PEng, CEng, MIET

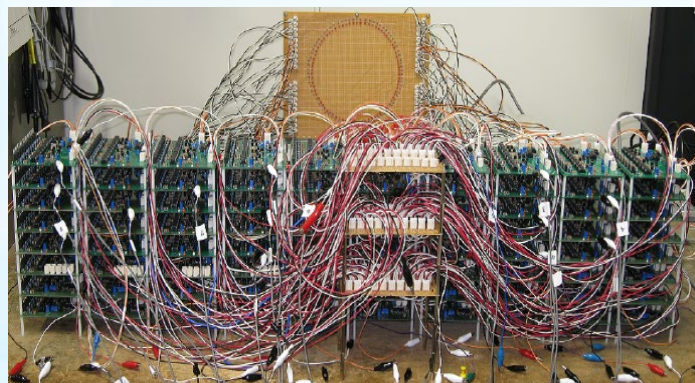
Associate Professor, Department of Electronic Engineering
Universiti Tun Hussein Onn Malaysia (UTHM)

Research Areas:

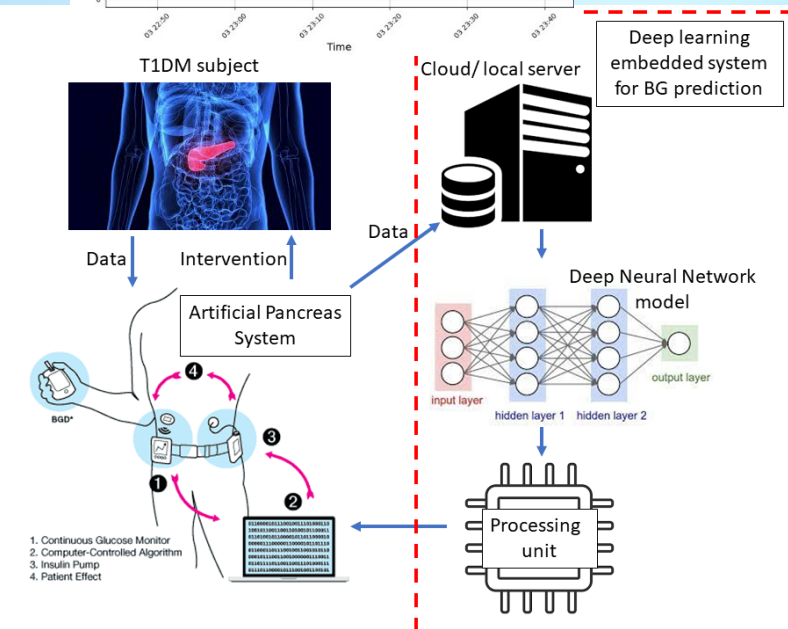
- Medical Electronic Modeling & Simulation
- Embedded Systems in Healthcare
- AI and IoT Applications in Medicine

Current Focus:

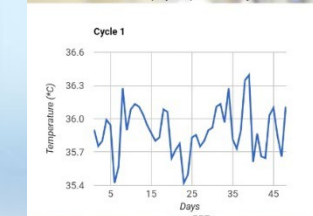
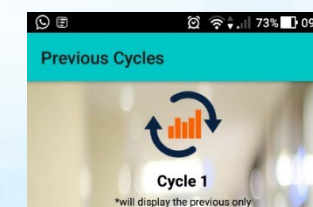
- Cardiac excitation & conduction hardware modeling
- Glucose-insulin dynamics simulation
- Near-infrared spectroscopy (NIRS) for blood flow/glucose monitoring
- AI + IoT for hospital stay prediction, time-series blood glucose forecasting
- IoT-based BBT fertility detection system



Digital-analogue hybrid model of cardiac excitation&conduction



Smart diabetes management framework



IoT-based smart BBT monitoring